

## ***Ranger Design***

### ***Commercial Van Equipment***

Adding efficiency and function  
to your commercial vehicles



# Efficiency

Ranger Design has provided practical solutions for your vehicle since 1988. These years of experience and product development have resulted in outstanding equipment that does the job efficiently and is built to last.



## ① Ladder Rack

Ranger racks make loading and unloading ladders an easy, one-person operation. Built of aluminum and stainless steel, they are strong, durable, and rustproof.



## ② Shelving

Designed to organize and store, Ranger shelves are contoured to maximize the floor space and storage capabilities of your vehicle. Dividers can be repositioned to best accommodate your payload.



## ③ Bin Shelving

Ranger bin shelves keep all your parts easily accessible, and in full view. Shelves are sloped back to avoid spillage of stock and include a complete outfit of durable bins.



## ④ Drawer Systems

Ranger drawer systems allow fast, easy access to your most-used tools. Drawers slide on durable guides or ball bearing rollers.



## ⑤ Accessories

Accessories complete your vehicle outfitting, making it safe and efficient. A full range of products will help to minimize clutter, better place the most useful items, and provide safety equipment as required.

Add efficiency and function



# Benefits

## Strong

Ranger products are built strong and durable. All Ranger components are constructed using heavy-gauge aluminum alloy 5052H32 and 6061T6 extrusions. Ranger products often outlast the vehicle they are in, and can be transferred to a newer van or truck.

## Custom-fit

Ranger's product line is constantly evolving to ensure we have the precise product application required for your vehicle. Products are designed to fit with maximum efficiency. Proper fit translates into a better usage of the available work space.

## Rustproof

Ranger has successfully eliminated all possibility of rust by building products exclusively of aluminum and stainless steel, which means a longer product life. As an additional bonus, vehicles are free from unsightly corrosion.

## Lightweight

A standard Ranger outfit can weigh up to 50 percent less than a comparable steel outfit. This translates into substantial savings in fuel consumption. A lighter outfit also means less wear on your vehicle's brakes and suspension, as well as more capacity for your payload.

## Quiet

Ranger's products give a quiet ride. By building and assembling to very precise tolerances, the end product comes out tight and rattle-free. This means a more pleasant environment for the occupants of the vehicle.





# Ladder Racks



A strong,  
lightweight  
solution for  
your ladders



## Benefits

### Strong

Ranger ladder racks are built to stand the test of time. Constructed of heavy-duty components and cast aluminium feet, these racks often outlast the vehicle.

### Corrosion free

Made of quality 5052H32 and 6063-T5 alloy, Ranger racks will never rust. All hardware and clamps are built from stainless steel. The durable powder coat finish ensures satisfaction by maintaining a bright new sheen, year after year.

### Lightweight

Amazing but true: Ranger's most popular rack, the #1025, weighs only 43 lbs.

### Efficient

Reliable locking systems effectively hold extension and step ladders in place, allowing for the use of a padlock.

**NOTE**  
Safe operation of these racks is the responsibility of the operator.  
All ladders must be securely attached. Death or injury could result from ladder falling off.



# Ladder Racks

- Advantages**
- All aluminium powder coated construction
  - All stainless steel hardware and clamping mechanism
  - Heavy duty cast aluminium feet for unsurpassed rigidity
  - Custom designed models available for all vans
  - Standard silver grey powder coat paint finish

## #1025 Combination Ladder Rack

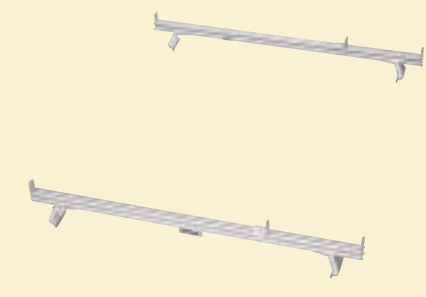
The combination ladder rack is our most popular model. It has a clamping mechanism for an extension ladder and rails to conveniently hold a stepladder. The top step of the stepladder is covered by the front hood and the back rung is attached with a nylon strap and the swing down step lock.

MODEL	APPLICATIONS	WEIGHT
1025	Most fiberglass boxes	43 lbs

Capacity 400 lbs per rack.  
Please specify make, model, and year of vehicle when ordering.



100% aluminium & stainless  
steel construction  
with powder coat finish

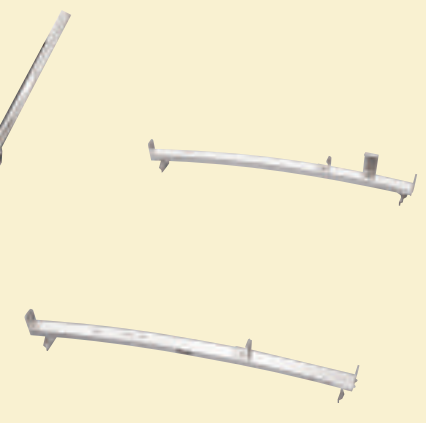


## #1005 Cargo Rack

This versatile rack feature a tubular aluminium extrusion that incorporates slots for bolting accessories. This rack is ideal for carrying lumber, pipe, plywood, and ladders. Each rack includes tie-down eyes, side ladder stops, and a front wind deflector. Racks come as a pair; please specify if you want three or four bars for the same vehicle.

MODEL	APPLICATIONS	WEIGHT
1005	Fiberglass boxes	18 lbs

Capacity 240 lbs per bar. Please specify make, model, and year of vehicle when ordering. Additional bars can be used for greater payload.

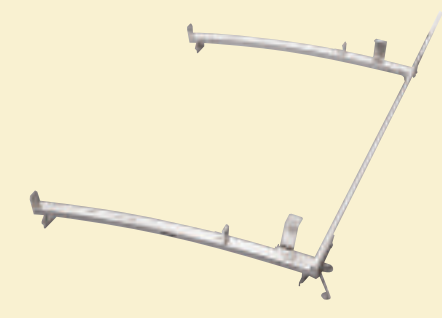


## #1010 Standard Ladder Rack

This all purpose ladder rack has curved aluminium crossmembers arched to fit the roof of the van and bring the loading height as low as possible. Comes with side ladder stoppers and front hook, cast aluminium feet and stainless hardware.

MODEL	APPLICATIONS	WEIGHT
1010	Fiberglass boxes	18 lbs

Capacity 200 lbs per bar. Please specify make, model, and year of vehicle when ordering.



## #1020 Single Side Ladder Rack

This ladder rack uses the same heavy duty crossmembers as the standard rack with the added convenience of a clamping mechanism for an extension ladder. Loading and unloading a long ladder becomes a simple one man operation, and by adding a padlock your ladder can be securely locked in place.

MODEL	APPLICATIONS	WEIGHT
1020	Most fiberglass boxes	28 lbs

Capacity 400 lbs per rack. Please specify make, model, and year of vehicle when ordering.



## #1030 Double Side Ladder Rack

This ladder rack comes with a stainless steel clamping mechanism on both sides for safely carrying two extension ladders. Ladders can be locked by simply adding a padlock.

MODEL	APPLICATIONS	WEIGHT
1030	Most fiberglass boxes	36 lbs

Capacity 400 lbs per rack. Please specify make, model, and year of vehicle when ordering.

## #6079 Transport Tube Hardware

Ranger's pipe kit turns a 6" PVC pipe into a means of transportation for long lengths that would normally clutter up the floor of your van. The cast aluminium door with a stainless hinge can be padlocked for added security. The stainless steel hoops hold it securely to your rack.



6075 - Transport Tube Door only  
6079 - Transport Kit Door Kit

## #1040 Side Mount Rack

This rust-free rack is powder coated silver gray and is fabricated entirely of aluminium, stainless steel and nylon. Bolts to the side of vans or fibreglass bodies to safely carry a step ladder or an extension ladder.



Ladder Racks





# Drawer System



Easy access  
to your most  
used tools



## Benefits

### Strong

Ranger's tool drawers have an amazing capacity of 320 lbs. The parts drawers are capable of easily handling 150 lbs. of parts and fittings.

### Efficient

Studies have proved that a well-organized van can save a technician at least ten minutes per day. Ten minutes x 250 days = 40 hours x \$40. The time saved translates into \$1600 per year.

### Lightweight

The complete quality drawer system shown above weighs only 120 lbs.

### Quiet

Ranger's drawer systems are uniquely engineered to eliminate all rattles and vibrations. Drivers are treated to a quiet, distraction-free ride.

### Ergonomic

Access to all the most used tools and parts from the ground reduces back injuries caused by climbing, reaching, and twisting inside the vehicle.

### Secure

Expensive or hard-to-replace tools can be safely locked in sturdy drawer compartments separate to the vehicle's security locking system.



# Drawer System



## Tool Drawer Advantages

- Fast, easy access to your most used tools.
- Secure, lockable storage for valuable power tools, test sets, telephones etc.
- Plenty of storage space even for tools in their carrying cases.
- Drawers roll on high quality roller bearings.
- 320 lbs capacity per drawer, heavy guage aluminium construction.

## #5020 Tool Drawer

Large capacity tool drawers are hard to find. Ranger has gone the distance to come up with one that stows so much. Made from rust free aluminium, these cases feature strong welded construction, a tray that extends on 3 ball bearing rollers, a stainless steel locking paddle latch and an attractive bright finish. These tool drawers may be installed for access by either the side or rear door of the van. For a real space-saving measure we've designed the parts drawers so that they can stack directly on top of the tool drawer.

MODEL	APPLICATIONS	WEIGHT
5020	Aluminium Tool Drawer	46 lbs
Exterior sizes	Interior sizes	
48" x 13½" x 16"	45" x 12½" x 12½"	



## #5020-#5010-#5012-#5048 Jumbo tool drawer with partsliders and top edge.

Ranger's tool and parts drawers can be configured in many different ways. While this is one of our most popular set-ups, Ranger's versatility allows you to find the combination that is just right for you.



## #5025 Jumbo Tool Drawer

This larger capacity tool drawer is a perfect choice for larger tool kits, and for those who want more space to lock up valuable tools. The same function and features as our 5020 tool drawer.

MODEL	APPLICATIONS	WEIGHT
5025	Aluminium Jumbo Tool Drawer	52 lbs
Exterior sizes	Interior sizes	
48" x 15½" x 19½"	45" x 14½" x 16"	

## Partslider Advantages

- Fast, easy access to your most used parts and tools.
- Drawers slide on durable low friction plastic glides, capacity 150 lbs per drawer.
- Each drawer comes complete with dividers.
- Fully assembled and adjusted.



## #5010 Partsliders

Storing parts within easy view and reach will save steps and add up to greater efficiency in the way you work. These drawers may be used alone, stacked on one another or stacked on top of tools drawer as shown. Parts tray glides smoothly on nylon guides to give easy access to your tools or parts. Dividers are included.

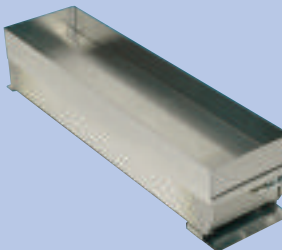
MODEL	APPLICATIONS	WEIGHT
5010	Drawer with bracket for mounting on top of Tool Drawer.	35 lbs
5012	Drawer with bracket for mounting on top of Parts Drawer.	35 lbs
5014	Kit to mount 5012 to floor.	

**Exterior sizes Interior sizes**  
48" x 12" x 6" high 46" x 11" x 4¼" high

## #5048, #5049, #5050 Aluminium Top edge

A necessity for storing parts on top of your drawers. Aluminium edge 4" high.

MODEL	APPLICATIONS
5048	Fits 5010
5049	Fits 5020
5050	Fits 5025



## #5060 Drawer Cabinet

Ranger's drawer cabinet is a high quality, heavy duty chest with drawers rolling on 150lb capacity roller drawer slides. Each drawer has adjustable aluminium dividers. This chest can be mounted in many locations in any type of vehicle and a worktop can be added to one or more units to create a workbench. A hinged bar swings over all 5 fronts and can be locked with a padlock for high security.

**Exterior sizes**  
24" wide x 18" deep x 36" high

**Interior sizes**

- Two drawers 3" high X 15" X 19½" (INT)
- One drawer 4" high X 15" X 19½" (INT)
- One drawer 6½" high X 15" X 19½" (INT)
- One door 9½" high

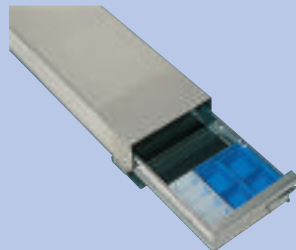


## Plastic Bins

Plastic bins are available to further separate each compartment.

**Small white bin CB379**  
3¼" x 2" x 2½" H.

**Medium blue bin EK2**  
3½" x 3¾" x 2½" H.



Drawer System

Strong,  
smooth roller  
operation you  
can count on





# Shelving



Custom fit  
to maximise  
space



## Benefits

**Strong**  
Ranger's exclusive shelf construction of extrusions and laminate willingly carries the load time after time.

**Quiet**  
Shelf dividers drop into specially engineered slots that eliminate all rattles.

**Lightweight**  
Extra durability doesn't necessarily mean extra weight. Ranger's popular #4448 shelf weighs a mere 56 lbs.

**Versatile**  
Ranger shelves are easily adjustable in order to accommodate any kind of cargo.



# Shelving

## Advantages

- Different shelf depths to maximize the storage capabilities.
- Front and back lip is an extruded aluminium section, perforated to receive adjustable dividers.
- Available in many lengths with over 30 standard sizes.

Ranger van shelving has several different standard depths. Straight back shelving for cube vans and trailers is the same depth on all the shelves.

## #4400 series Shelving unit



Uniquely constructed  
to be strong and rattle free



Models 4848 and 4448



### #7121 Tool Case Shelf Model

This shelving is usually mounted close to the door of the vehicle and used for tool cases, parts boxes, etc.

**Exterior sizes**  
21" wide x 15" deep x 36" high



### #9048 Shelving unit shown with optional doors and floor angle

Shelving units are available with optional doors and floor angles.

MODEL	APPLICATIONS
7600	Floor angle 1" X 1"
7700	Each door with locking stainless steel latch



### #4800 series Extra deep shelving unit

This unit features extra deep shelves for increased storage. It comes with four shelves (option with five shelves) and is taller than normal.



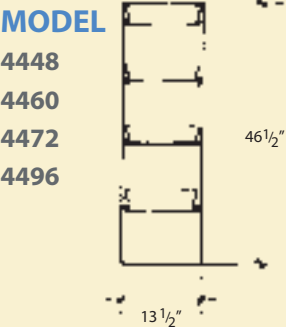
### #7119 Locker Shelf

Hang up overalls or protective clothing in our custom-fit locker. Comes with three hooks and a shelf on top for extra storage.

Shelving

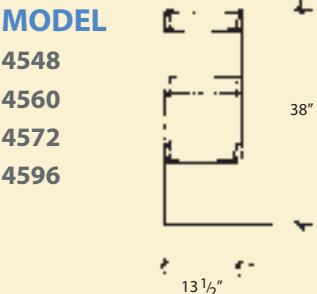
### 44 SERIES

Our most popular shelving unit for cube vans. Standard with 4 shelves. Option with 3 shelves.



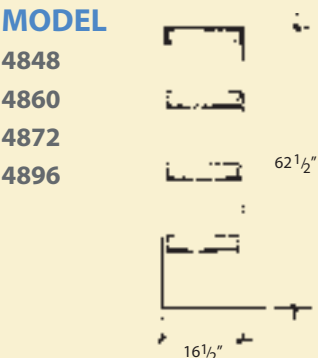
### 45 SERIES

Straight shelving for vans, fiberglass bodies (front) and some mini van applications. Standard with 3 shelves.



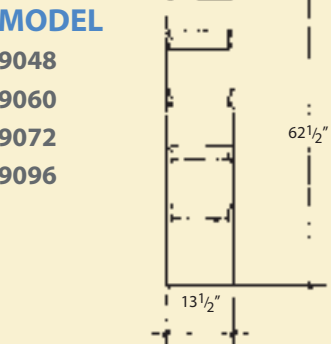
### 48 SERIES

Deep straight backed shelving for cube vans. Standard with 4 shelves.



### 90 SERIES

This standard depth shelf unit is taller than a 44 series unit. For higher cube trucks. Standard with 4 shelves. Option with 5 shelves.





# Bin Shelving

## Advantages

- All your parts in full view and easily accessible.
- Shelves sloped back to prevent spillage of stock.
- Units come complete with high quality plastic parts bins.
- Many models available for different applications.

## #9100 series Bin shelving unit

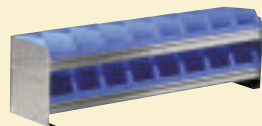
The most popular bin unit for cube trucks has seven rows of medium bins and stands 62½ inches tall.



An  
organized  
approach  
to storage

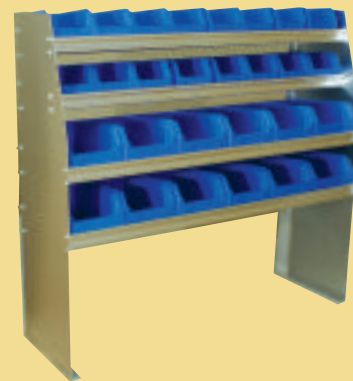
## #7848 Bin Shelf

Bin unit with 2 shelves of 6221 bins. Can be mounted on top of drawers or on the floor of van.



## #7109 Binder Shelf

Designed for your books, binders and more, this compact unit fits nicely beside any full size shelf and is made with the same heavy duty construction.



## #5800 Bin shelving

This unit has an angled front to make your truck feel more spacious. Comes with four rows of bins.



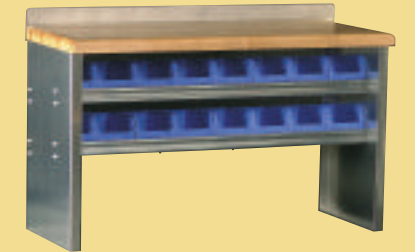
## #9200 Refrigerant Bin unit

This unit is ideal for storage for tanks of refrigerant in bottles or boxes in the vertical position.



## #9300 series Extra deep bin shelving unit

This unit features extra deep shelves for increased storage. It comes with five shelves of large bins.



## #7211 Work Bench

This heavy duty workbench with a laminated hardwood top is great for locksmiths, servicemen and others who work in their van. Comes with two rows of medium plastic bins.

- 7209 Comes with one shelf
- 7210 Comes with a shelf and door



Model 9148



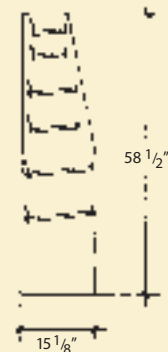
Model 5848

Versatile storage for small parts and fasteners

## 73 SERIES

Similar to the 58 series shelving. The 73 series come with two extra rows of small bins.

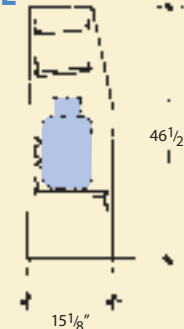
### MODEL 7348 7360



## 74 SERIES

This popular refrigerant storage shelf has two rows of medium bins.

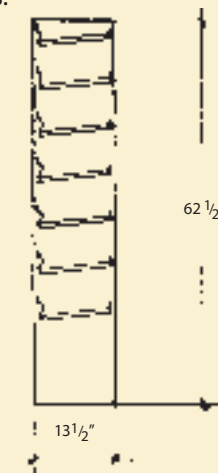
### MODEL 7448 7460



## 91 SERIES

This unit has seven rows of medium bins.

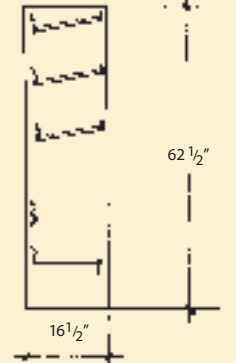
### MODEL 9148 9160



## 94 SERIES

This extra deep freon unit has three rows of large bins for extra storage.

### MODEL 9448 9460







# Fold-Up Shelving

## Advantages

- Silent
- Adjustable
- Rounded corners for safety
- Optional cargo rail
- Light weight

## #8400 Fold-up Shelving

Ranger Express's unique fold-up shelving system is light weight and strong, and is available in many different configurations. Gas springs hold shelves firmly in the up or down position and eliminates vibrations and rattles. Available with cargo rail to strap packages down.



Light weight and strong

## 84 SERIES

Fold-up shelving for cube vans. Standard with 3 shelves. Optional with 2 shelves.



## 84 SERIES

### 3- shelf units

- 8448
- 8458
- 8472

### 2- shelf units

- 8448-2
- 8458-2
- 8472-2



# Bottle Restraint Systems

## Advantages

Ranger has a wide range of options for safely transporting various tanks and bottles. Check state or provincial laws governing pressurized container transportation to be sure.



## #6005 Two-Level Enclosed Bottle Holder

This bottle holder is usually mounted on the end of a shelving unit and holds two refrigerant bottles.



## #6015 Bottle Holder With Hinged Lid

Installs on the end of a shelving unit or on any flat surface.



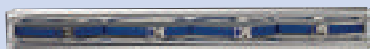
## #6010 Two Level Bottle Holder

This adjustable bottle holder is usually mounted on the end of a shelving unit and holds refrigerant bottle, welding kits or more.



## #6086 Small Model #6088 Large Model Bottle Holders

A secure way to transport oxygen bottles, acetylene bottles and larger nitrogen bottles.



## #6030 48" #6035 60"

## Refrigerant Bottle Rack With Straps

Many possible mounting positions. Holds 4 refrigerant bottles safely.



## #6020 Refrigerant Bottle Holder

Can be mounted on top of tool drawer or any flat surface in the van. Holds up to 4 bottles of refrigerant.



## #6087 Cap For Bottle Holders

Mounts on top of small or large bottle holders (#6086 or #6088) to comply with laws in certain states and provinces.

Bottle Restraint





# Organizers and Parts Storage

### Advantages

Ranger's heavy duty cab boxes and parts storage systems are designed to keep your office on wheels as organized as possible. In today's mobile society this is a definite must.

### #5045 Cab Organizer

This large cab box has a locking latch, pencil holder, space for hanging files and a painted cover. Ideal for all full size vans.

**Exterior sizes**  
18" x 12" x 16" high.



### #5072 Parts Keeper Floor Mount Kit

Floor mount kit with one aluminium Parts Keeper and plastic parts case. Attaches to the floor of your vehicle or to any surface.

◀ (Shown with 3 optional 5070 stacker kits)



### #5070 Parts Keeper Stacker Kit

Stacker kit with one aluminium Parts Keeper and plastic parts case. Mounts on top of floor mount kit or shelf mount. Add as many stacker kits as needed to give you the storage space you required.

◀ (Shown mounted on 5074 shelfmount kit)



### #5074 Parts Keeper Shelf Mount Kit

Shelf mount kit with one aluminium Parts Keeper and plastic parts case. Mounts on to any Ranger shelving unit.



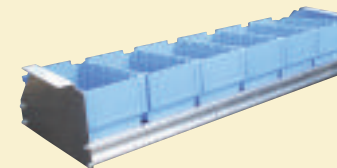
### #5076 Parts Keeper Under Shelf Kit

Under shelf kit with one aluminium Parts Keeper and plastic parts case. Installs underneath any Ranger shelf.



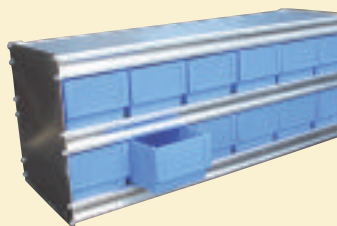
### #5081 Bin Drawer Shelf With 6 Bins

Large bins pull out like drawers or remove completely as necessary. Mounts under most Ranger shelving units.



### #5085 Bin Drawer Shelf With 12 Bins

Large bins pull out like drawers or remove completely as necessary.



### #5040 Cab Organizer

This smaller cab box has space for letter size hanging files and a paper clip on the lid.

**Exterior sizes**  
Size 8" x 15" x 14" high.



### #5043 High Security Cab Box

This high security cab box is designed to hold lap-top computers and other valuable equipment. Comes with two locking latches.



### #5046 Raised Base

This base raises the cab box to a more comfortable writing height and offers the added benefit of making the box removable.

◀ (Shown with 5045 cab box)



# Accessories

**Advantages**  
Ranger offers a full range of high quality accessories to further personalise your van.

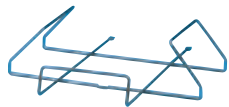
**Road Safety**  
Bring your fleet up to current safety standards. Have your vehicle well-equipped to protect both the driver and others on the road, with items required by law in many states and provinces



**#6091 - #6094 Tie Down Ring**  
Secure loads with these rings.  
Model #6094 Recessed



**#6090 Back up Alarm**  
A high quality back up alarm with a die cast housing and a 106 db alarm.



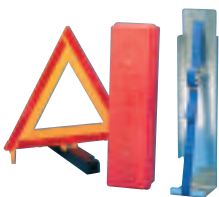
**#6068 Hard hat holder**  
Keeps your hard hat clean, out of the way and always available.



**#6062 - #6064 Fire extinguishers**  
High quality, refillable fire extinguishers complete with vehicle attaching brackets.  
#6062 Small 2 1/2" X 16"  
#6064 Large 5" X 16"



**#6050 Flettner Vent**  
This rotary vent works much the same as an attic vent to draw air out of the vehicle as you drive. A high quality plastic product with a good seal & bearing.



**#6082 Triangle kit**  
Plastic case with 3 reflective triangles for roadside use. Aluminium holder with belt for secure storage.



**#6080 First Aid Kit**  
Now a requirement in many areas, a first aid kit is always a wise addition in any service van. Ours comes with a sleek aluminium holder for ease of use.

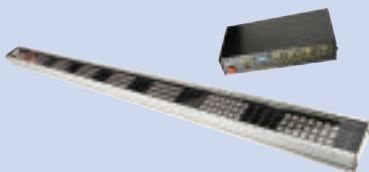


**#6211-21-31 Plastic Parts Bins**  
High quality plastic parts bins available separately.

Large	6231	13" x 8" x 6" H
Medium	6221	9" x 6" x 5" H
Small	6211	6 1/2" x 4" x 3" H



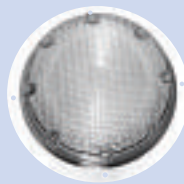
**#6093 Grab Handle**  
High impact grab handle.



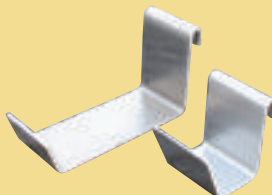
**#6081 Warning Arrow**  
Star model 7730 Arrow stick has L.E.D. lights for long life and very high visibility. Only 1 amp draw.



**#6083 Amber strobe**  
Star model 200 A can be wired to flash single, dual, or quad. A very high quality strobe light.



**#6092 Dome Light**  
This 7" diameter light with chrome ring far exceeds the standard lights found in vans. Standard 1156 bulb.



**#6073 - #6074 Moveable Hooks**  
These heavy duty hooks can be easily moved and can be used for cords, ladders and more.  
Large Model #6073  
Small Model #6074



**#6065 Coat Hook**  
Heavy duty metal hook.



**#6070 Fixed hook**  
Large aluminium hook for cords, rope etc.  
Model #6070



**#6072 Swivel Hook**  
Extra large swivel hook for welding cables, cords, and hoses.



**#6054 Hitch Step**  
This handy step slides into a 2" x 2" hitch and combines the strength of a steel shaft with the security of an aluminium grip step.



**#6085 Folding Step**  
This zinc plated step gives you that needed height when something is just out of reach, and folds up when you are done with it.



**#6052 Slide Out Holder**  
This steel slide-out vise holder can be mounted at the back or side of a van, and locks solidly in the in or out position.



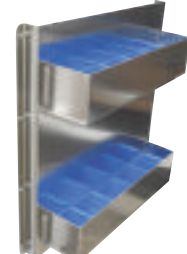
**#6056 Deluxe Paper Holder**  
for log books and more.  
9 1/2" x 2" x 6" high.



**#6057 Aluminium Holder**  
Fits 3 aerosol cans or other parts. Can be mounted on partition or shelf end.  
10" wide x 3" deep x 3" high.



**#6069 - #6067 Paper Holder**  
With 12" clear in every pocket our holders will fit folders, catalogues, papers and more. Available with 2 or 5 slots.  
6067 2 slots 14" x 12" ext.  
6069 5 slots 14" x 24" ext.



**#6066 Two-Pocket Door Panel**  
Mounts to the door on most vans. With 2 deep pockets that prevent items from falling out but still keep them visible.

**Lighting**  
Make sure your vehicle is highly visible on the outside and well lit on the inside.

*Please request  
Ranger catalogues  
for these other  
applications*



GM



Chrysler



Ford



Made in Canada by:



**Ranger Design Inc.**  
19160 Cruickshank, Baie-D'Urfé,  
Quebec, Canada H9X 3P1  
  
Tel.: 514-457-8181  
Toll free: 1-800-565-5321  
Fax: 514-457-8180

**Your Ranger Distributor:**